

COMMUNITY AMENITIES

- Lounge with Pool Table, Fireplace, Seating and WiFi
- Dog Park & Dog Wash - We Love Pets! *
- Controlled Access Building
- 24 Hour Fitness Center with Top-Of-The-Line Equipment
- Demonstration Kitchen
- Resort Inspired Pool with Hot Tub
- Package Locker System & Bike Wash
- Smoke-Free Community
- Outdoor Lounge with Fire Pits and Barbeque Stations
- Professional On-Site Management and Maintenance
- Complete Online Suite of Services
- Quick Access to I-15 and I-80
- Short Drive to Sugar House and Downtown Salt Lake

INTERIOR AMENITIES

- Two and Three Bedroom Townhomes with Attached 2-Car Garage
- Distinctive Wood-Style Flooring and Plush Carpeting
- Modern Soft-Close Cabinetry
- Valet Trash Service
- Contemporary Pendant Lighting*
- Stainless Steel Appliances & Designer Faucets
- Granite Countertops Throughout
- Full Size Washer & Dryer
- Expansive 9 to 11 Foot Ceilings*
- Kitchen Pantry and Prep Island *
- Large Walk-In Closets and Dual Vanities*
- Abundant Storage
- Unbeatable Mountain Views*

TAKE YOUR PLACE AT HAWTHORNE

HawthorneSLC.com
385.722.9560

2852 South West Temple
Salt Lake City, UT 84115



HAWTHORNE
TOWNHOMES

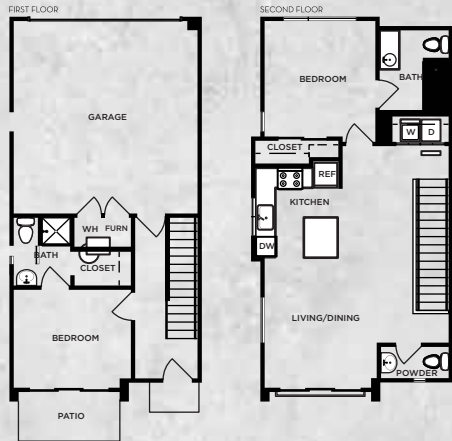


*Restrictions Apply See Sales Associate for Details

FLOOR PLANS

*all square footage is approximate

YUCCA
2 BED | 2 1/2 BATH
1,141 SQ FT



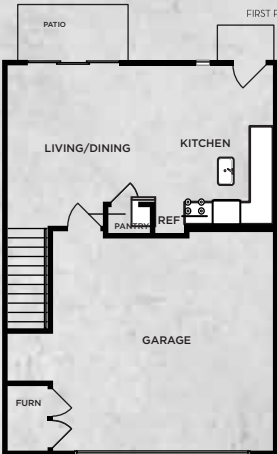
CHICORY
3 BED | 2 BATH
1,394 SQ FT



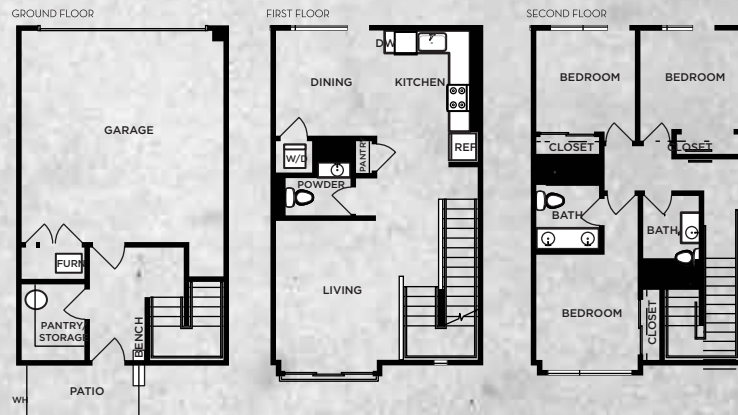
SAGE
3 BED | 2 1/2 BATH
1,537 SQ FT



ALOE
2 BED | 2 BATH
1,121 SQ FT



ROSEUM
3 BED | 2 BATH
1,394 SQ FT



AGAVE
3 BED | 2 1/2 BATH
1,513 SQ FT